

Follow the Gold: Mining Ancestors

Shauna Hicks

www.shaunahicks.com.au

www.shaunahicks.com.au/shhe-genie-rambles

<http://diaryofanaustraliangenealogist.blogspot.com>

Twitter: HicksShauna

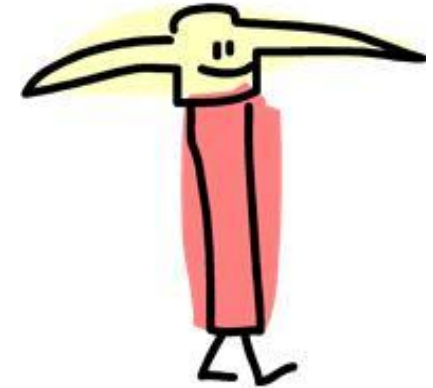


Introduction

- Background history for context
- Archives & Libraries
- Trade Unions & Company Records
- Historical Societies & Museums
- Miners' Health
- Newspapers & Photographs



Background History



- Miners moved around
- Major mining rushes (they followed new discoveries)
 - South Australia 1840s
 - Victoria & NSW 1850s
 - Queensland 1860s
 - Tasmania 1870s
 - Western Australia 1890s



- Don't forget the trans Tasman connection





WIKIPEDIA
The Free Encyclopedia

Article **Discussion**

Read **Edit** View history

Search

Mining in Australia

Or New Zealand

From Wikipedia, the free encyclopedia



This article's **lead section may not adequately summarize its contents**. Please consider expanding the lead to **provide an accessible overview** of the article's key points. *(September 2010)*

Mining in Australia is a significant **primary industry** and contributor to the **Australian economy**. Historically, mining booms have also encouraged **immigration to Australia**. Many different ores and minerals are mined throughout the country.

Contents [hide]

- 1 History
 - 1.1 Gold rushes
- 2 Mining
 - 2.1 Minerals and resources
 - 2.2 Mining regions
 - 2.3 Coal mining
 - 2.4 Uranium mining
 - 2.5 Natural Gas
- 3 Economics
- 4 Technology and services
- 5 Lifestyle
- 6 Environment and politics
- 7 Mining disasters
 - 7.1 New Australasia Gold Mine
 - 7.2 Mount Kembla
 - 7.3 Balmain Colliery



Super Pit gold mine at Kalgoorlie in Western Australia is Australia's largest open-pit mine

http://en.wikipedia.org/wiki/Mining_in_Australia

Tasmania's Mining History: A bibliography

General

- Anon., 'Mineral rich regions of Australia', Part 1: Tasmania's Mt Read volcanics. Part 2: The Pilbara region of Western Australia: more than iron ore and gas', in *Johnny Green's Journal*, vol. 9, no. 4, April 1989, pp. 15–18, vol. 10, no. 3, January 1990, pp. 6–10.
- Aubrey, Michael, 'A history of mining exploration starts to pay off: Tasmania', in *Miner*, Darlinghurst, NSW, November 1989, pp. 10–11.
- Blainey, Geoffrey, 'The rise and decline of the West Coast', in Tasmanian Historical Research Association, *Papers and Proceedings*, vol. 4, 1960, pp. 66-74.
- Burton, B., 'Undermining Tasmania: a research paper on the mining industry', Wilderness Society, Hobart, 1989.
- Dickens, Greg, *Mining in Tasmania - a brief history*, Tasmania Geological Survey Record 1995/11, Mineral Resources Tasmania, Hobart, 1995.
- Donovan and Associates, *A Mining History of Australia*, Donovan & Associates History and Historic Preservation Consultants, Blackwood, SA, 1995.
- Fenton, James, *A History of Tasmania from its Discovery in 1642 to the Present Time*, J. Walch and Sons, Hobart, 1884.
- Gaughwin, Denise, 'Trade, Capital and the Development of the Extractive Industries of Northeast Tasmania', in *Australasian Historical Archaeology* 10, 1992 [published 1994], pp. 55–64.
- Hills, Loftus, 'The progress of Geological Research in Tasmania Since 1902', in *Proceedings of the Royal Society of Tasmania*, 1921, pp. 111-146.
- Hogg, E.G., 'The Magnetic Survey of Tasmania', *Proceedings of the Royal Society of Tasmania*, vol. 117, 1983, pp. 81-88.

Bibliography of Australian Mining History

Minerals

Copper

Gold

Iron

Silver and Lead

Tin

- Anon., 'Tin mining at Mount Cleveland', in *Australian Trader*, vol. 7, September 1970, p. 55.
- Blackaby, Narelle, *Rossarden, Echo of the Mountain*, self-published, Canberra, 2004.
- Cochrane, G.W., *Tin deposits of Victoria*, Bulletin of the Geological Survey of Victoria, no. 60, Department of Mines, Melbourne, 1971.
- Crowther, Edward Lodewyk, *Journal of Prospecting in Gould's Country, N.E. Tasmania, 1875-76, 19?*

www.mininghistory.asn.au

[Home »](#)

Historical resources

[▼ Heritage maps](#)
[▼ Minerals industry historic photo collection](#)
[▼ Heritage primefacts](#)

The department has a number of resources that provide historical information on Minerals & Petroleum activities in NSW.

Heritage maps

The department's collection of heritage geological maps is in the process of being catalogued, conserved, scanned and archived. In the future high quality copies of these maps will also be available for purchase.

A unique collection of geologically notated parish maps is also being captured and a small sample is provided.

[▶ Heritage maps](#)

Minerals industry historic photo collection

NSW Department of Primary Industries holds a significant heritage collection of images documenting the activities of the department of mineral resources and the mining industry from the late 1800s to the present.

The images range across geological localities, geologists and other staff at work, mining localities, specimens from the economic rock & mineral collection, micrographs and illustrations used in technical presentations.

The collection is housed in the department's Minerals Division office in Maitland in the Hunter Valley of NSW.

With a prior appointment, researchers may conduct their own search of this collection on-site. DPI staff may also carry out searches at a cost of of \$30 per hour or part thereof for this service.



Fire investigation team wearing Proto breathing apparatus at the C.S.A. Mine near Cobar in 1920. L to R, A. J. Julius - Mine manager, Gwyder Whalen - surveyor & Bob Pivetta - underground foreman.

www.resources.nsw.gov.au/historical



Department of Transport, Planning and Local Infrastructure



Home

Planning

Heritage

Local Government

Sport & Recreation

You are here: > Home > Heritage > Historical archaeology > The history of gold mining in Victoria

About ▶

Grants ▶

Publications & Research ▶

Projects & Programs ▶

News & Events ▶

Heritage

Permits ▶

Victorian Heritage Register ▶

Caring for heritage places and objects ▶

Heritage Forms & Guidelines ▶

Local Government ▶

Historical archaeology ▼

Archaeological sites and the Heritage Inventory ▶

The history of gold mining in Victoria

Victoria has a rich history in gold mining. It was the main reason for immigration to Victoria in the from the 1850s to the 1900s. The remnants of mining activities remains today in the form of historical archaeological artefacts and sites.

Over 3000 sites are recorded in the gazetteers (based on the State's mining divisions).

In addition the historic gold mining potted histories contain concise histories by area.

We have developed a comprehensive inventory of the State's extant historic gold mining sites on public land. The complete reports collection is available through our offices.

For further information, please contact archaeology.admin@dpcd.vic.gov.au.



Top

OMELO DISTRICT GOLDFIELD - NOTES

- 1851:** Gold officially discovered at Livingstone Creek, Omeo, by men employed by Edward Crooke, licensee of Hinno Mungey station, about 10 miles below Omeo - small rush followed - about 100 - worked with shovel and tin dish - almost abandoned mid-1852. Area prospected as far as Cobungra station. Among early parties was Hedley, (Flett, p. 169)
- 1852:** Gold found at Bindi on Tambo River. (Flett, pp. 171-2)
- 1854:** Early in year, 50 miners at Omeo, surfacing and sluicing - later that year, 180 men 'between Mt Livingstone and the Swamp', working in creek or on eastern bank terraces. (Flett, p. 170)
- 1854-6:** Mining camp called Omeo - became a town in 1856. (Flett, pp. 170-71)
- 1855-7:** First in series of long sluicing races constructed - Champagne and Co. (Frenchmen) built theirs early in 1855 - they were original party to work the area now known as the Oriental claims. Fitzgerald and party commenced cutting races, which delivered water to Bloomfield's Gully, and (later) Pioneer claims.¹
- 1856-7:** Gold found in tributaries of Livingstone Creek - Dry Creek and New Rush Creek opened, 1857. (Flett, p. 170).
- 1856+:** The alluvial deposits in the Dry Gully area (now loosely grouped as the Oriental claims) 'are over one hundred feet thick in parts [and] apparently occupy the bed of an ancient tarn or mountain lake, and are auriferous for almost the complete depth...'²
- 1857-60s:** Fitzgerald and party took up claims on hill at junction of Livingstone Creek with Dry Gully and Mountain Creek in 1857 - working ground as Pioneer claim, ground sluicing, in 1858. Pioneer and French parties competed for water rights - Fitzgerald took up agricultural ground around Dry Hill and west of Livingstone Creek - restricted others from building water rights around his ground.³
- 1863-4:** Township and Pioneer reefs opened up. (Flett, p. 171)
- June 1864:** 425 alluvial miners (275 Chinese, 150 Europeans) - no quartz miners. Population focused on Livingstone Creek (265) and Mitta-mitta River, from Cobungra to Wombat Creek (120) - 20 at Tambo River and Swift's Creek, 15 at Wombat Creek. Chinese population does little mining in winter months - cannot endure the cold at Omeo.

BEECHWORTH GOLDFIELD

- | DATE | HISTORY: • |
|-----------------|--|
| 1852: | First discovery on present site of Beechworth, February 1852. ¹ |
| 1853: | Woolshed (part of Reedy Creek, about 6 km below Beechworth) opened 1853 - extraordinarily rich by 1855 - township extended for 2_ miles, but almost deserted within a few years. ² |
| 1855: | Discoveries of new fields at Eldorado in 1855 and Wooragee (Magpie Creek), north of Beechworth, in 1856. ³ |
| 1856: | Small party cut a tail-race from the Spring Creek falls up to the alluvial flats on Spring Creek, east of Beechworth, then virtually abandoned, 1856 (future Rocky Mountain Co. claim) - had been held in very small claims and worked by sinking and driving, then tub-and-cradled - tail-race 20 chains long, blasted 2-8 ft deep through rock - took 18 months to complete, cost £3,000 - not deep enough to drain deepest ground - much gold left behind. ⁴ |
| 1859: | Spring Creek, 1859 - called Spring Creek above the Upper Falls and Woolshed Creek below the Lower Falls - originally worked in paddocks - slabs and bark used to prevent sides falling in - then worked over again with sluice-boxes - now being worked for third time, by improved sluicing methods. ⁵ |
| 1860: | 2,310 European miners, 2,139 Chinese ⁶ - Upper Three-Mile Creek worked since 1852 - now chiefly taken up by Chinese, sluicing (likewise Lower Three-Mile/Bowman's). ⁷ |
| 1861: | Battery of 16-head, 15-hp steam engine erected at Two-Mile Reef, 1861. ⁸ <ul style="list-style-type: none">• The 'great' Excelsior tail-race, Reid's Creek, being extended by blasting through tough granite, 15 ft deep, 1861.⁹ |
| 1861: | Bawden's (or Rawden's) Steam Co., Woolshed, 1861 - 'have given up the system they first adopted, of ground sluicing their claim, and in consequence of having little or no fall to work upon, lifting up the tailings and water by buckets on an endless band of vulcanised India rubber some 15 ft and discharging it over the bank into the creek; they now only lift the water and bank up the tailings as well as they can.' ¹⁰ |
| 1861: | German and Durham crushing machine, 2-Mile Creek, 1861 - 12-head, 12-16 hp engine. ¹¹ |
| 1861-62: | European miners leaving for the Lachlan and New Zealand, 1861-2 - Chinese taking over ground. ¹² |



Quick Links

- [Eaglehawk Festival 2012 Photo Galleries](#)
- [Resource Centre Hours](#)
- [Latest News](#)
- [Ballarat Branch](#)
- [Geelong Branch](#)
- [OverlandGold](#)
- [Contact Us](#)



Welcome to the "Home Page" of the Cornish Association of Victoria Inc, Australia.

Browse the menus above and enjoy all we have to offer. If you live in Victoria, Australia you might like to join our vibrant Association. We meet at the Oakleigh Baptist Church Hall, which is situated at the corner of Warrigal Road and Moorookyle Avenue, Oakleigh. (Melway Ref. Map 69 E10).

For all enquiries contact the Secretary: [Miss June Whiffin](#),

Monthly meetings are held the 3rd Saturday, between 1.30 pm and 4.30 pm. February to November and the 2nd Saturday of December.

Library and Research facilities are also situated at the Church Hall, and are open on the 2nd Tuesday, the 3rd Saturday and 4th Monday of each month from 10 am to 2 pm (except January).

The first meeting for 2013 will be on Saturday 16th February.

Title of presentation: Tour of Cornwall May 2012 Visit.

Lynette & Graeme Madden & other CAV tour members speak and show picture presentation of their May 2012 tour

Take a look at the menus above and there is sure to be information and/or images of interest.

Ballarat Branch – meets on the 1st Saturday of EVEN months at 5.00pm. The venue is the Skipton Street Uniting Church Hall – cnr Skipton & Darling Streets, Ballarat South (opposite Skipton and Drummond St crn).

Branch Secretary: [Lenice Stuchbery](#)



HISTORY - NAMES



Home Culture History Language Music Myth Politics Religion What's on

'The splendour of the history of Wales is that, unlike most other countries, the tradition of the nation has persisted through thousands of years.' *



The Welsh have been involved in the development of Australia from the earliest days of European settlement. Their impact has been notable in a number of key areas of Australian life -- especially in the mining industry -- but has always been limited by their relatively small numbers. It has also been obscured by the long-held but misleading view that, with the exception of the Irish, all British people who have settled in Australia have been culturally homogeneous. Although overwhelmingly Protestant and, since the sixteenth century, politically and economically integrated with England, the Welsh have brought to Australia a distinctive cultural identity' - A. Ffestin Hughes



Original Southern Cross from the Eureka Stockade

The Birthplace of Australian Democracy



+ IN AUSTRALIA

+ IN AUSTRALIA

A New Nation is Born

Sir

SAMUEL WALKER GRIFFITH (1845-1920); chief justice and premier, was born at Merthyr Tydfil, Glamorganshire, Wales, second son of Rev. Edward Griffith, Independent minister, and his wife Mary. He travelled extensively in many countries of the world and made a name as a brilliant young barrister. He strove to protect aborigines, fought for free, secular compulsory education and spearheaded the legislation of trade unions to improve relations between labour and capital. In 1891 he was given the task of drafting the Constitution for the Commonwealth of

John Basson Humffray was born in [Newtown](#), Wales and became active in the [Chartist](#) movement before migrating to Australia.

After campaigning for better rights for the miners on the Victorian goldfields Humffray was elected inaugural President of the [Ballarat Reform League](#) at a monster meeting of over 10,000 diggers at Ballarat in 1854. He met with Governor

<http://web.aanet.com.au/soulpsychology/welshaustralian/Historyindex.htm>

Harvest of Endurance



Chinese miners



Mining for gold is physically demanding work. Here, Chinese miners are using a sluice box and puddling mill to search for gold, while another miner has a massage to relieve his aching shoulders.

Home

Explore the scroll

- Before the gold rush
- Chinese workers
- Australian gold rush
- Chinese miners
- Anti-Chinese violence
- Lambing flat riots
- A safe haven
- Isolated and homesick
- Rise of merchants
- Market gardens and musicians
- Vendors and cooks
- Laundries and factories
- The general store
- Trouble in the homeland
- Opium
- Revolution in China
- Republican victory
- Healing the sick

www.nma.gov.au/collections

Archives & Libraries

- State – Fact Sheets, Published Guides, Online Catalogues (inter library loans)
- University
 - Noel Butlin Archives Centre
- Specialist
 - Bendigo Regional Archives Centre



Mining Records

Queensland State Archives holds an extensive collection of records of the Mines Department and the Mining Warden's Offices throughout the State. They relate to the development and government administration of the Queensland mining industry since separation. The mining industry has always played a significant role in the Queensland economy and a large proportion of the population of Queensland was employed in the mining industry prior to World War I. Research of mining records is time-consuming because of the large volume of departmental indexes and the fragility of the registers and plans. Photocopying of registers is not permitted because of possible damage to the original binding. Some early press copy letterbooks are too fragile to be re-opened and are therefore closed to public access.

There are separate series of records for the three types of mining - gold, coal and base metals - as specified in the Mining Act and the Coal Mining Act. Mining records are accessioned under the general headings:-

MINES DEPARTMENT
GOLD COMMISSIONER (before 1874)
MINERAL LANDS COMMISSIONER (1872 - 1898)
MINING WARDEN (from 1874)
INSPECTOR OF MINES
MINING REGISTRAR AND ASSISTANT MINING REGISTRAR

Miners' Homestead Leases

Brief Guide 48

The Gold Fields Homestead Act of 1870 encouraged gold miners and others to become permanent residents on the gold fields of Queensland. From 1 March 1871 it repealed the *Gold Fields Towns Lands Act* of 1869 and enabled any holder of a miner's right, business license or gold mining lease (or any other authorised adult resident) to make application for a lease of land on a proclaimed gold field. The applicant must have been resident on the field for not less than six months and the application had to be lodged at the office of the Commissioner in charge of the gold field. The area applied for was not to exceed 40 acres. An Application Book was to be kept at the office of the Gold Commissioner on every proclaimed gold field. The number of applicants was restricted to one hundred on each field and leases were transferable. Any miner with a valid miner's right was able to search for gold on the land.

An amendment to the Act in 1880 enabled any holder of a miner's right to apply for a lease not exceeding a quarter of an acre within the limits of a township for residence or business purposes. This amendment also directed that all rents and revenue from the leases be paid to a special fund to be expended on roads, bridges and other public works on the respective goldfields under the superintendence of the relevant local authority.

The Gold Fields Homestead Leases Act of 1886 repealed the previous acts. It changed the areas of proposed leases: leases could be up to half an acre within township limits, five acres within two miles of the town boundaries and forty acres beyond two miles.

The Mineral Homestead Leases Act of 1891 authorised the issue of Homestead Leases in Mining Districts (i.e. for mining other than gold), on terms which were the same as for the Gold Fields Homestead Leases.

Index to Mineral Leases 1871-1940



This Index was created from several series of records created by the Mines Department and the Mining Warden, Cloncurry. The majority of these records are the printed lease documents with identifying information completed by hand.

Background

1. **Series ID 18221 (MIN/N1-48), Gold mining leases** dated 1/8/1871 - 31/7/1919. Details given include name(s) of applicant(s) for lease, where they were from, yearly rent payable, Act under which lease was granted, where the lease was situated (name of goldfield), area of land, term (in years) and date of commencement of lease, minimum number of miners to be employed, county and parish, description and sketch map of boundaries of lease, transfers (date and to whom).
2. **Series ID 18222 (MIN/O1-56), Mineral leases** dated 21 Jan 1884 - 11 Oct 1940. Details given include name(s) of applicant(s) for lease, where they were from, mineral sought, yearly rent payable, district where the lease was situated, area of land, term (in years) and date of commencement of lease, description and sketch map of boundaries of lease, transfers (date and to whom).
3. **Series ID 7367 (A/20586), Index to Coal Mining Licence Register under the Act of 1886** dated 12/1/1888 - 23/7/1954. This record is an Index to coal mining licence register under the Minerals Lands (Coal Mining) Act of 1886. Details include licence number, name and folio number. Folio numbers from 299 - 590 provide access to [Series ID 17138 \(B1265\), Register of Coal Prospecting Licences](#) dated 12/1/1888 - 23/7/1959. [Please note this item (B/1265) is not included in the Mineral Leases 1871-1940 Index].
4. **Series ID 9132 (A/45843), Mineral and Water Race Leases** dated 16/9/1910 - 30/11/1933. Details given include name of mineral field, county and parish, locality area, date of lease, names of lessees and details of transfers.

www.archives.qld.gov.au

Name of Company	Date of Registration	File No.	Book	Registration Year	Companies Office
Lady Ann P C United Gold Mining Company Ltd	19/05/1888	84	5		
Lady Augusta Gold Mining Company Ltd	22/05/1888	89	5		
Lady Carrington Gold Mines Limited	18/04/1898	75	9		
Lady Don Gold Mining Company Ltd	21/12/1883	233	2		
Lady Eleanor Gold Mining Company Ltd	08/06/1886	270	3		
Lady Flora & Doctor's Extended Gold Mining Company Ltd	18/03/1884	265	2		
Lady Florence Extended Gold Mining Company Ltd	23/02/1888	41	5		
Lady Florence G M Co Ltd	10/04/1895	299	7		
Lady Florence No 1 West Gold Mining Company Limited	05/08/1895	43	8		
Lady Franklin Gold Mining Company Ltd	25/09/1885	181	3		
Lady Helena G M Co Ltd	26/08/1889	298	5		
Lady Isabelle and Content United G M Co Ltd	21/01/1892	295	6		
Lady Isabelle Block G M Co Ltd	25/09/1891	220	6		
Lady Isabelle Limited	25/10/1895	77	8		
Lady Isabelles No 2 & 3 South United G M Co Ltd	07/06/1892	32	7		
Lady Jane Gold Mining Company Limited	16/08/1886	291	3		
Lady Lamington Gold Mining Company (No Liability)	10/06/1896	141	8		
Lady Lamington Gold Mining Company Limited	31/07/1899	256	9		
Lady Margaret Extended G M Co (No Liability)	01/12/1891	268	6		
Lady Margaret G M Co Ltd	11/09/1891	216	6		
Lady Maria Extended G M Co Ltd	05/11/1891	248	6		
Lady Maria Gold Mining Company Limited	26/05/1885	122	3		
Lady Maria Gold Mining Company Ltd	16/06/1882	97	2		
Lady Marici Gold Mining Company Limited	16/06/1882	97	2		
Lady Mary 1 & 2 South Gold Mining Company Ltd	09/01/1888	300	4		
Lady Mary and New Zealand G M Co Ltd	10/08/1893	140	7		
Lady Mary Company (No Liability)	02/09/1907	135	1	1907	Townsville
Lady Mary Gold Mining Company Boonoo Boonoo Ltd	16/11/1887	254	4		
Lady Mary Gold Mining Company Limited	27/11/1894	258	7		
Lady Mary Gold Mining Company Limited	15/09/1902	32	11		
Lady Mary Gold Mining Company Ltd	10/10/1872	94	1		

www.archives.qld.gov.au

Petitions of the People

Petitions from the Nineteenth Century Correspondence to the City of Sandhurst (Bendigo)

www.brac.vic.gov.au

VPRS 16936 P1 (1856-1899)

Selected from Bendigo Council's Inwards Correspondence (VPRS 16936) "Petitions of the People" allows a rare insight into life from 1856 to 1899, a period when this gold mining tent town grew into a thriving Victorian city.

A signature on a petition may be the only tangible evidence that an ancestor lived in Bendigo, practiced a particular trade or profession or felt strongly about a local issue.

The Bendigo Regional Archives Centre (BRAC) was successful in receiving funding from the Victorian Government in celebration of the 175th anniversary of the founding of Melbourne.

As BRAC's contribution to this 175th birthday, more than 200 petitions will be digitised. The first twenty petitions available cover three significant themes: Occupations, Women and the Post Office Clock, and more than 1000 names.

[Search for a name and links to the Petitions](#)

More petitions will be added to the collection as they are ready.

If you can help us correct unknown or misspelt names, please email brac@ncgrl.vic.gov.au

[More information about the petitions](#)

Find your ancestor - More names to search!!

We now have 5625 names in our searchable "Petitions of the People" list.

In addition to the 20 digitised petitions that are readily available on our web page, we have indexed and digitised a further 150 petitions, and now have a total of 5,625 names on our searchable list.



BRAC Collection

BRAC is an approved Place of Deposit (POD) for local and regional government records and certified by Public Record Office Victoria to hold permanent records. BRAC houses the extensive public records of the five Local Government bodies that have become the City of Greater Bendigo:- Bendigo (Sandhurst), Eaglehawk, Huntly, Marong and Strathfieldsaye. Many McIvor Shire records will be included.

Records from other Local Government authorities in the region will be collected.

Private records created by local organisations and individuals will also be collected and preserved.

The BRAC collection will reflect the history of Local Government administration, local events, individuals, institutions and organisations in the Bendigo region.

Local Government Records will become available as they are processed.

[BRAC Guide No. 3 - Guide to Bendigo and District Rate Records](#)

[BRAC Guide No. 4 - Records available as of February 2012](#)

NOEL BUTLIN ARCHIVES
CENTRE[Home](#)[Collections](#) ▾[Companies](#)[Organisations](#)[Personal papers](#)[National AIDS Archive
Collection](#)[Maps](#)[Photographs](#)[Finding aids](#) ▾[Ablative](#)[Subject Guides](#)[Treasures of the Archives](#)[Using the Archives](#) »[For Depositors](#) »[News & events](#) »[Publications](#)[Frequently asked questions](#)

Subject Guides

Subject guides are written by archivists at the Noel Butlin Archives Centre to introduce researchers to the various topics that can be researched at the Centre. They cover many popular research areas.

On-line subject guides:

- [Australians in the First World War \(PDF 116KB\)](#)
- [Australians in the Second World War \(PDF 155KB\)](#)
- [Australian/Indonesian relations \(PDF 118KB\)](#)
- [Colonial Sugar Refining Company \(CSR\) Limited records relating to employees \(PDF 134KB\)](#)
- [Communist and socialist publications \(PDF 114KB\)](#)
- [Family history sources in the Noel Butlin Archives Centre \(PDF 106KB\)](#)
- [Gold Mining \(PDF 109 KB\)](#)
- [Intercolonial Trade Union congresses \(PDF 139 KB\)](#)
- [Peace movement in Australia \(PDF 150 KB\)](#)
- [Records about Aboriginal People \(PDF 119KB\)](#)
- [Spanish Civil War \(PDF 120KB\)](#)

www.archives.anu.edu.au

ANU ARCHIVES PROGRAM

Noel Butlin Archives Centre

Telephone: +61 2 6125 2219

Email: butlinarchives@anu.edu.au

www.archives.anu.edu.au

www.archives.anu.edu.au

RECORDS ABOUT GOLD MINING

COMPANY RECORDS

The Noel Butlin Archives Centre holds records of a number of companies involved in gold mining. Some examples of company records are:

Adelaide Steamship Company Ltd

Outwards Correspondence relating to private freighting accounts & syndicates of J Turnbull (Secretary and General Manager), 1888-1892 (N46/566)

Australian Agricultural Company

Letters to General Superintendent regarding potential gold deposits, 1853-1856 (1/46/1)

Mineral prospecting papers including letters, tracings and reports in connection with prospecting in the Port Stephens district, 1855-1904 (1/64/4)

Clarke and Co (Melbourne)

Company, 1932 (67/72)

Correspondence of TM Owen regarding Wiluna Gold Mines Ltd, WA, 1927-1932 (67/71)

Correspondence of TM Owen regarding Reef Gold Mine, Gundagai, 1932 (67/66)

Correspondence of TM Owen regarding Occidental Gold Mines NL, 1932-1933 (67/62)

Correspondence of TM Owen regarding Main Ridge Gold Mine, 1932 (67/58)

Peel River Land and Mineral Company

Despatches from the early years of the company documenting initial success in the search for gold followed by the decline in value to the company. They include monthly reports of gold licences issued.

UNION AND ORGANISATION RECORDS

The records of many unions and organisations include files about gold miners. The items listed below are just a sample.

Australian Workers Union (Head Office)

Industrial Court Transcripts Gold and Metalliferous Mining Industry, 1917 (N117/622-624)

Minutes of the Amalgamated Miners Association, Wrightville, Ganbelego Branch. Includes minutes of the Truckers & Boodlers of Mt Boppy Goldmine, 1910 (N117/1467)

Federated Engine Drivers' and Fireman's Association of Australia (Federal Council)

Tasmanian Goldmines, transcript of proceedings in the Commonwealth Conciliation and Arbitration Court, 1913 (T56/3/4-5)

Federated Engine Drivers' and Fireman's Association of Australia (NSW Branch)

Demarcation dispute with AWU over gold mining, 1983-1989 (N129/528-530)

Holdway-McMahon - Mt Carrington Goldmines (Drake Operation), 1988 (N129/1182)

Fitzherbert, PB, *The crisis: New Zealand's future depends upon your vote* Wellington, New Zealand, 1931 (Gold Standard) (P5/1/375)

Fitzherbert, PS, *The dawn of the new outlook* Wellington, NZ, 1931 (P5/1/376)

Mining Act, also amending Acts with Regulations thereunder, 9th edition, Sydney Government Printer, 1894 (P5/1/887)

Moloney, Dan, *The history of Addson's Flat goldfields* Westport, New Zealand, Westport News, 1923 (P5/1/818)

Miscellaneous Pamphlet Collection

From Tent to Parliament: the life of Peter Lalor and his coadjutors, and history of the Eureka Stockade Ballarat, 1934 (P56/253/22)

Lenin, VI *The Importance of Gold Now and After the Victory of Socialism*, Sydney, Modern Publishers Pty Ltd, first published in USSR Nov 1921 (P56/250/54)

Australian Agricultural Company, London
Guide to the Northern Gold Fields by an Old Bushman, Sydney, Woolcott & Clarke, 1856 (78/1/25)

State Library collections

e-resources

SLQ collections + e-resources

mining and history

All South Bank Collections

Search

Advanced search

Refine your search: Books that contain my query words anywhere in the record

Did you mean: china and history?

Show only

[Full Text Online](#) (3)
[Available in the Library](#) (513)

Refine my results

Subject
[Gold mines and mining](#) (274)
[Mines and mineral resources](#) (62)
[Australia](#) (60)
[Coal mines and mining](#) (47)
[Victoria](#) (25)
[Show 15 more](#)

Author/Creator

523 Results for All South Bank Collections

sorted by: Relevance

1-10 [Next](#)Show only [Full Text Online](#) (3) | [Available in the Library](#) (513)☆ [The Gold rushes](#)W. P. Morrell (William Parker), 1899-
London : Adam and Charles Black 1940
Available: Open access, level 4 (J 994.03 mor)[Request](#) [Locations](#) [Details](#) [Reviews & Tags](#) [More](#)

This is 1 of 2 versions of this work

☆ [The rush that never ended : a history of Australian mining](#)Geoffrey Blainey 1930-
Parkville, Vic. : Melbourne University Press 1963
Available: If available, request & collect from level 4 (J 622.0994 bla) and<http://onesearch.slq.qld.gov.au>



Search for ...

All our websites

Our Catalogue

Go to whole of WA Government search

Dead Reckoning

How to find your way through the genealogical jungle of Western Australia

Dead Reckoning

How to Begin

The Battye Library

Books

Serials

Other Material

Private Archives

Indexes and

Catalogues

State Records Office





Archive Accessioning
Systems

Government Archival
Records

Other Australian
States and Overseas

Further Sources

Abbreviations

Share this page    

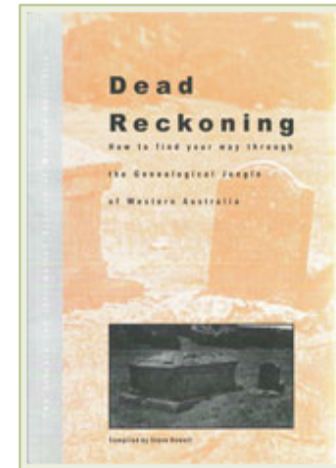
Dead Reckoning: a guide to family history research in WA

If you are a novice family historian just starting out tracing your family tree or an experienced genealogy researcher looking for whatever happen to the elusive great uncle. Dead Reckoning is your handbook to family history research in Western Australia.

Dead Reckoning: how to find your way through the Genealogical Jungle of Western Australia (compiled by Steve Howell) was first published in 1997. It was an update of the 1983 Library Board of Western Australia publication: [Tracing your ancestors: a guide to genealogical sources in the J.S. Battye Library of West Australian History](#).

Since 1997, the Battye Library and the State Records Office have received new material of interest to anyone undertaking genealogical and biographical research. As well, many relevant internet resources have been developed. Following a grant from the Sholl Bequest (administered by the Friends of Battye Library Inc.), it was decided to revise and publish the book online, so it can be regularly updated as appropriate resources and material are found.

The online publication is divided into various sections. The first section covers how to begin, legal deposit, copyright,



www.slwa.wa.gov.au/dead_reckoning



Search for ...

[All our websites](#)

[Our Catalogue](#)

[Go to whole of WA Government search](#)

Dead Reckoning

How to find your way through the genealogical jungle of Western Australia

Indexes and Catalogues: A-M

[Arrivals](#)

[Biographical](#)

[Births, Baptisms, Deaths, Burials & Marriages](#)

[Cemeteries](#)

[Colonial Secretary's Office](#)

[Correspondence](#)

[Convicts](#)

[Inquests](#)

[Land Owners](#)

[Members Interests Directories](#)

[Military](#)

[Mining Lease Holders](#)

[Dead Reckoning](#) > [Indexes and Catalogues](#) > [A-M](#) > [Mining Lease Holders](#)

[printer friendly](#)

Share this page [f](#) [t](#) [■](#) [S](#)

Mining Lease Holders

[Mining lease holders names 1 January 1892 to 31 December 1909 \[microform\].](#)

Bayswater, W.A. : Western Australian Genealogical Society, [1996].
[929.39 MIN]

This is a microfiche index of mining lease holders 1892-1909. It has been taken from a Mines Department Nominal Index to Mining Tenements ([CONS 4603/6 - Record Series 1028](#)) and provides the name of the lease holder, lease number, goldfield and date of lease holding.

Page last updated: Tuesday 23 November 2010

www.slwa.wa.gov.au/dead_reckoning/indexes_and_catalogues/a-f2/mining_lease_holders

Trade Unions & Company Records

- Miners often belonged to a union
- Membership records may be useful
- Mining not always solitary pursuit
- Companies may be worth looking at – especially shareholders



[Home](#)[About](#)[Search](#)[Browse](#)

Welcome to the Australian Trade Union Archives

A gateway for researchers and scholars of labour history

- [Find people](#)
- [Find trade unions](#)
- [Find peak union bodies](#)
- [Find employer bodies](#)
- [Find government agencies](#)
- [Find publications](#)

Search

GO

e.g. name of organisation, person.

→ [Advanced search](#)

Parties to the Award



[Parties to the Award](#)

A Guide to the pedigrees and archival resources of Federally registered trade unions, employer associations and their peak councils in Australia 1904-1994.

Timeline



[Timeline](#)

A timeline relating to labour history in Australia 1788-2001.

Search results for: mining

178 results found.

18 pages of results.

1. [Construction Forestry Mining & Energy Union \(i\) - Trade Union entry - Australian Trade Union Archives](#)

... O P Q R S T U V W Y Trade Union entry Construction Forestry Mining & Energy Union (i) (1992- 1993) CFMEU Chart 7 ...
Terms matched: 1 - 8 Nov 2010 - URL: <http://www.atua.org.au/biogs/ALE0383b.htm>

2. [Construction Forestry Mining & Energy Union \(ii\) - Trade Union entry - Australian Trade Union Archives](#)

... O P Q R S T U V W Y Trade Union entry Construction Forestry Mining & Energy Union (ii) (1993-) CFMEU Chart 7: ...
Terms matched: 1 - 8 Nov 2010 - URL: <http://www.atua.org.au/biogs/ALE0384b.htm>

3. [Construction Forestry & Mining Employees Union - Trade Union entry - Australian Trade Union Archives](#)

... P Q R S T U V W Y Trade Union entry Construction Forestry & Mining Employees Union (1992) Chart 7: Trade Unions- Building, Construction ...
Terms matched: 1 - 8 Nov 2010 - URL: <http://www.atua.org.au/biogs/ALE0385b.htm>

4. [Federated Mining Mechanics Association of Australasia - Trade Union entry - Australian Trade Union Archives](#)

... N O P Q R S T U V W Y Trade Union entry Federated Mining Mechanics Association of Australasia (1929- 1990) Chart 7: Trade Unions ...
Terms matched: 1 - 8 Nov 2010 - URL: <http://www.atua.org.au/biogs/ALE0427b.htm>

5. [Australasian Coal & Shale Employees Federation - Trade Union entry - Australian Trade Union Archives](#)

... 1990) Miners' Federation Chart 7: Trade Unions- Building, Construction, Mining and Timber Industries Details From 1916 To 1990 Functions Trade Union (Federal) ...
Terms matched: 1 - 8 Nov 2010 - URL: <http://www.atua.org.au/biogs/ALE0103b.htm>

6. [Federated Mining Employees Association of Australia \(i\) - Trade Union entry - Australian Trade Union Archives](#)

... N O P Q R S T U V W Y Trade Union entry Federated Mining Employees Association of Australia (i) (1912- 1914) Chart 22 ...
Terms matched: 1 - 8 Nov 2010 - URL: <http://www.atua.org.au/biogs/ALE0425b.htm>

7. [Amalgamated Mining Employees Association of Victoria & Tasmania - Trade Union entry - Australian Trade Union Archives](#)

... N O P Q R S T U V W Y Trade Union entry Amalgamated Mining Employees Association of Victoria & Tasmania (1912) Chart 22: Trade Unions ...
Terms matched: 1 - 8 Nov 2010 - URL: <http://www.atua.org.au/biogs/ALE0039b.htm>

Australasian Coal & Shale Employees Federation (1916 - 1990)

Miners' Federation

From	1916
To	1990
Functions	Trade Union (Federal)
Reference No	087V

Summary

Registered federally in 1913 as the Australasian Coal Miners' Association this union was buoyed significantly in 1914 by the inclusion of members from the defunct Victorian Coal Miners' Association. In 1916 the Australasian Coal Miners' Association changed its name to the Australasian Coal & Shale Employees' Federation which operated until 1990 when it amalgamated with the of Australasia to form the United Mineworkers' Federation of Australia. In 1992 the BWIU Amalgamated Union in 1992 and later that year with the Federation of Australasia and the Operative Plasterers' & Plaster Workers' Union of Australia to form the Construction Forestry & Mining Employees Union. This union was reregistered as the Construction Forestry Mining & Energy Union in 1993 following amalgamations with the Federated Furnishers' & Decorators' Union of Australia and the Operative Painters' & Decorators' Union of Australia.

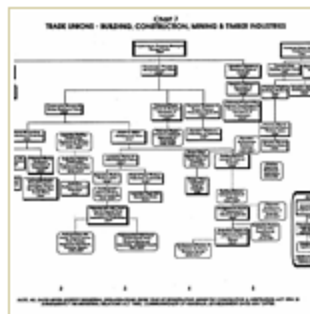


Chart 7: Trade Unions - Building, Construction, Mining and Timber Industries

Timeline

? - 1874 Sandhurst Miners Association

? - 1874 Buninyong Miners Association

? - 1874 Blackwood Miners Association

? - 1874 Clunes Miners Association

? - 1874 St Arnaud Miners Association

? - 1874 Malmsbury Miners Association

? - 1874 Stawell Miners Association

? - 1874 Maldon Miners Association

? - 1874 Haddon Miners Association

1870s - c. 1883 Creswick Miners Association

1874 - c. 1884 Amalgamated Miners Association of Victoria

1907 - 1914 Victorian Coal Miners Association

c. 1884 - 1916 Amalgamated Miners Association of Australasia

1913 - 1916 Australasian Coal Miners Association

1916 - 1990 Australasian Coal & Shale Employees Federation

1990 - 1992 United Mineworkers Federation of Australia

1992 Construction Forestry & Mining Employees Union

1992 - 1993 Construction Forestry Mining & Energy Union (i)

1993 - Construction Forestry Mining & Energy Union (ii)

www.atua.org.au

Browse Entries

[A](#) [B](#) [C](#) [D](#) [E](#) [F](#) [G](#) [H](#) [I](#) [J](#)
[K](#) [L](#) [M](#) [N](#) [O](#) [P](#) [Q](#) [R](#) [S](#) [T](#)
[U](#) [V](#) [W](#) [Y](#)

SELECTED EVENTS IN TRADE UNION HISTORY

Wonthaggi Coal Strike (1934)

From	1934
To	1934
Functions	Strike

Summary

In response to depression-era setbacks, miners at the Wonthaggi State Coal Mine go on strike. After five months the Menzies government eventually succumbs to the Miners' Federation's demands and in so doing, helps to pave the way for the gradual nationwide restoration of conditions and wages lost during the years of the depression.

Skip to

↓ [Published Resources](#)

Published resources

Journal Articles

- Cochrane, P., 'The Wonthaggi Coal Strike, 1934', *Labour History*, vol. 27, Australian Society for the Study of Labour History, Sydney, 1974, pp. 12-30. [Details](#)

www.atua.org.au

Guide to Australian Business Records

[Browse](#)

[Search](#)

[About GABR](#)

[Acknowledgements](#)

[Selected Online
Resources](#)

[Useful Paper-based
Resources](#)

[Company
Registration
Records](#)

[Site map](#)

[Contact us](#)



Published by Archive Research Consultancy, 2005
Comments, questions, corrections and additions - Contact Us
Updated: 1 October 2009

www.gabr.net.au

Historical Societies & Museums

- Google search
- Also try genealogy & family history societies
- Private individuals
 - The Goldminer's Database (NZ)



[Web](#)[Images](#)[Maps](#)[Shopping](#)[More ▾](#)[Search tools](#)[Country: Australia ▾](#)[Any time ▾](#)[All results ▾](#)[Clear](#)

[Copperfield - RootsWeb](#)

www.rootsweb.ancestry.com/~auscqfha/district_copperfield.htm ▾

Copperfield. In 1880 the following description of **Copperfield** was given In the **Queensland P Office Directory**; A **mining** township, four miles distant from Clermont ...

[Copperfield Store and Chimney - Queensland Holidays](#)

www.queenslandholidays.com.au/things-to-.../copperfield.../index.cfm ▾

In 1862, a 10 feet high wall of solid copper ore was discovered at **Copperfield**. **Queensland's** first copper **mine** opened and continued until the 1880's when the ...

[Clermont and Copperfield | Queensland Places](#)

www.queenslandplaces.com.au/clermont-and-copperfield ▾

Clermont, a former **mining** town of about 1850 people, is 320 km west of Rockhampton and 100 km north of Emerald. It was apparently named after Clermont, ...

[Copperfield, Queensland Australia - Totaltravel](#)

au.totaltravel.yahoo.com/destinations/destination/.../qld/.../copperfield/ ▾

Copperfield once was a booming township and home to **Queensland's** first copper **mine**. A must see is the **Copperfield Store** (now the local museum).

[Map of Copperfield Mine in Queensland - Bonzle ... - Bonzle.com](#)

www.bonzle.com > home > mines ▾

The **Copperfield Mine** is a **mine** just off the Clermont Rubyvale Road in south

Sovereign Hill

Gold Museum

Accommodation

Sound & Light Show

Education

Narnbool

Costumed School



IN THIS SECTION

- What to See and do
- About Us
- Membership
- Media Information
- Visitor Services

For more information, please call 03 5337 1100

A stylized map of Sovereign Hill. It features various building icons, winding paths, and street names like 'Main Street' and 'Queen Street'. A green arrow points to the 'ENTRANCE'. A north arrow is in the top right corner.

Please click here to download full map

Icons: Information, Currency, Restrooms, First Aid, Bed, Wheelchair, Mail, Location

www.sovereignhill.com.au

Gold Mining and Historical Museum

Home Page



- Home
- Events
- Museum
- Education
- Finds
- Newsletter
- Cafe ~ Gift Shop
- Clubs
- Steam Festival
- Links
- About Us

Home



Gympie Gold Museum Cafe'

Like 184

Welcome.

The town of Gympie has an important and colourful history, from being cited as the "Town that saved Queensland from Bankruptcy" to being the home of Andrew Fisher, Labor's second Prime Minister.

Everybody is invited to visit our Museum where you can find out just how Gympie saved Queensland and discover more of the region's past and present. The Museum houses a vast collection of documentation, artifacts and photographs dating from the discovery of gold in 1867 by James Nash to the recently closed operations of the Gympie Eldorado Goldmine.



Based on over 5 hectares the Museum has over thirty display areas housed in and around fifteen major buildings. The entry is through the café and souvenir shop. We welcome visitors of all ages and interests and offer special concessions and complementary guides for tour groups.



Contact

Museum

P: (07) 5482 3995

F: (07) 5482 5686

E:

info@gympiegoldmuseum.com.au

Museum Cafe/Markets

P: 07 54823995 (9am - 3pm 7 days)

E:

markets@gympiegoldmuseum.com.au

Location

Gympie Gold Mining & Historical Museum

215 Brisbane Road
Gympie, QLD
Australia

Facts

www.gympiegoldmuseum.com.au



LIGHTNING RIDGE AUSTRALIA

Lightning Ridge Historical Information

[Main Page](#)[Request Information](#)[Disclaimer](#)[Search This Site](#)[Main Page](#)[Main Page](#)[Contacts](#)[1900-1910 Text](#)[1911-1920 Text](#)[1921-1939 Text](#)[1940-1970 Text](#)[1971-2000 Text](#)[2000+ Text](#)[Pictures 1900-1920](#)[Pictures 1921-1930](#)[Pictures 1931-1950](#)[Pictures 1960s](#)[Pictures 1970s](#)[Early Camp Pictures](#)

The Historical Society was formed in 1982 to protect an abandoned miner's hut in the main street of Lightning Ridge. Western Lands declared the block a Crown Reserve, Historical Reserve No. 96499. Today, the hut is maintained as a token to the old timers, and open for inspection most days to locals and visitors

Occupied for forty years by Sid and George Graham, who extended their endless "verandah hospitality", the hut was built in 1932 by Albert Spicer when he struck opal. His son Mal still visits the Ridge and has presented the Society with original photos of his father and their camp at the 3 Mile.

Known today as Heritage Cottage, the hut offers tourist information and select handcrafted items are for sale in an historical setting. The bark dividing walls, dirt floors and kerosene tin chimney are typical of early Ridge architecture. The original wood stove may belt out heat, sending up whiffs of smoke, on a cold winter's morn!



www.wj.com.au/lrhistory/index.html

HOSPITAL SERIES

The Victorian Goldfields Hospitals Index: The Hospitals and the Information the Records Contain.

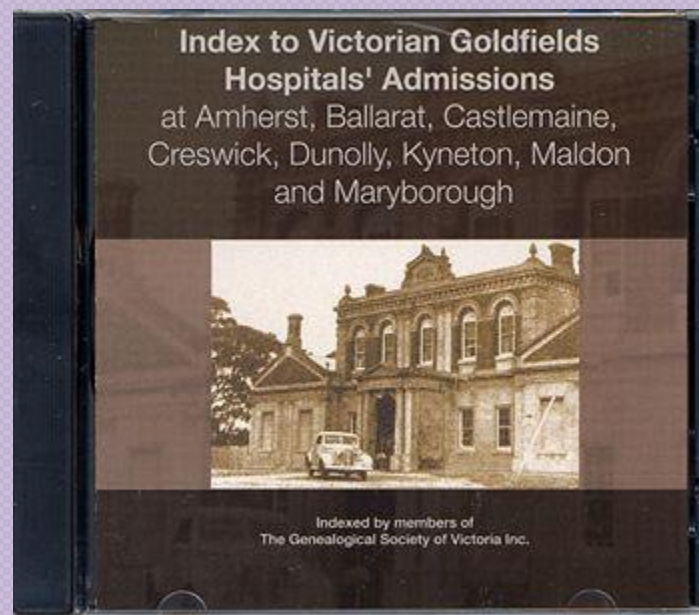
The CD is an amalgamation of indexes to records of the following eight hospitals. They are all admission records, except that which we have called the Kyneton Hospital Family record:

Amherst Hospital 1869-1888
Ballarat Hospital 1856-1913
Castlemaine Hospital 1855-1920
Castlemaine Benevolent Asylum 1860-1922
Creswick Hospital 1863-1882
Creswick Hospital outpatients 1873-1877
Creswick Hospital 1883-1894
Dunolly Hospital 1860-1900
Kyneton Hospital Admissions Register 1862-1885
Kyneton Hospital Family Record 1869-1884
Maldon Hospital 1864-1905
Maryborough Hospital 1855-1907

The index comprises ten fields of information: surname; given name(s); admission of patient; patient's place of birth; whether single, married or widowed; occupation; and source.

Various additional information is contained in the records.

www.gsv.org.au



GSV@home

As a member of the Society, some aspects of your research can be done from home. Where possible, the GSV is making this easier by enabling resources and services to be accessed through the Internet or email.

From our home page at www.gsv.org.au you can login as a member which takes you to the Members Menu featuring:

GIN - GENEALOGICAL INDEX OF NAMES

This currently contains over 3 million entries with over 61,000 images or documents attached (mostly relating to Victoria). Records are added on a regular basis. It includes school registers, government gazettes, local histories, hospital records, cemetery records and much more. In some cases links to sources and documents explaining the background of the source and abbreviations, etc are included.

GOLDRUSH ONLINE

THE GOLDMINER'S DATABASE

Search the names of 45000 goldminers from the goldrushes of New Zealand
Spanning the years 1861 - 1872

New Search

e.g. BROWN, John

Exact match

Wild card

Search

RECORDS INCLUDED IN THE GOLDMINER'S DATABASE

[Otago Mining Records \(1861 - 1866\)](#)

[Thames Mining Records \(1867 - 1872\)](#)

[Explanation of the Record Types in the Database \(First column in the results chart\).](#)

[Notes on the Thames Goldfields and searching the Database.](#)

[Miner's Rights in Thames.](#)

[The Major Goldrushes of the 1800s.](#)

Miners' Health



- A dangerous occupation
- Accidents (minor, fatalities, disasters)
- Miners phthisis
 - **Anthracosis** \An`thra*co"sis\, n. (Med.) A chronic lung disease, common among coal miners, due to the inhalation of coal dust; -- called also collier's lung and miner's phthisis.



Series ID	Item ID	Record Type / Description / Departmental Numbers	Start Date	End Date	Digital Images
18309	1028277	<u>Batch file, railway</u> Miners Phthisis Claim - Alexander Hay 35-217	11/12/1934	11/3/1935	<input type="checkbox"/>
6232	963715	<u>Correspondence</u> Notice of Question - Miners Phthisis Fund 78/1856	30/5/1978	31/12/1978	<input type="checkbox"/>
7645	275105	<u>Correspondence, mines</u> Miners phthisis: 1967L; 676L 5 Jan 1910; 676L 26 Jan 1910; 1048L 11 Feb 1910; 1461L 2 Mar 1910; 596L 25 Jan 1910; 877L 4 Feb 1910; 1241L 19 Feb 1910; 639L 27 Jan 1910; 640L 27 Jan 1910; 1220L 21 Feb 1910, cont.	1/1/1910	31/12/1910	<input type="checkbox"/>
14812	86596	<u>Correspondence, police</u> Miners Phthisis M1426	1/1/1917	31/12/1917	<input type="checkbox"/>
12353	8881	<u>Register - admissions, hospital</u> Register of admissions and discharges or deaths at Diamantina Hospital (may be indigents and miners' phthisis cases since included in register of allowances to these recipients of government relief) 2 - 341	1/1/1902	31/12/1907	<input type="checkbox"/>
6303	971253	<u>Register - correspondence, inwards</u> Treasury Department - Card register of letters received: Stamp dutv	1/1/1978	31/12/1978	<input type="checkbox"/>

www.archivessearch.qld.gov.au



Diseased and healthy lung (1st of 2)

Compare these sections cut from a diseased lung with large cavities (left) and a pink, healthy lung (right). The diseased lung shows a case of miner's phthisis (also known as silicosis) which has led to tuberculosis. Quartz dust is inhaled by miners, and trapped in the lungs causes silicosis making the victim more susceptible to diseases such as tuberculosis and pneumonia.

www.teara.govt.nz/en/gold-and-gold-mining



You are here: Te Ara Home > Earth, Sea and Sky > Mineral Resources

Gold and gold mining

Get the Short Story
A quick, easy read

by Carl Walrond

In the 19th century discovering gold was a way out of poverty. From the 1860s, gold rush followed gold rush, and thousands flocked to the fields. But the work was harsh, with days spent digging in cold creek beds. Only a lucky few found riches in the rock. However, the collective value of the gold that was discovered kick-started the young colony's economy. Gold was the making of early New Zealand.

[Continue...](#)



Explore this story:



[As good as gold](#)



[Where you find it](#)



[Otago](#)



[West Coast](#)



[Coromandel Peninsula](#)



[Other goldfields](#)



[Methods of mining](#)



[Dredging](#)



[Miners](#)



[Māori and Chinese miners](#)



[Recent mining](#)



[Gold and the economy](#)



[Further Sources](#)

www.teara.govt.nz/en/gold-and-gold-mining

Ballarat & District Genealogical Society Inc.

www.ballaratgenealogy.org.au

[Home](#)

[Meetings](#)

[Contacts](#)

[Help Wanted & Notices](#)

[Names](#)

[Eureka](#)

[Research](#)

[Membership](#)

Welcome to the Ballarat & District Genealogical Society in the Goldfields Region of Central Victoria, Australia

site search by freefind

[advanced](#)

If you have any membership queries or newsletter items visit our [Contacts](#) page. Use our [Research Service](#), [Help Wanted](#) or [Names](#) pages for research queries. Links to Ballarat visitor information, travel, etc., on the right of this page.

View a [Ballarat Timeline](#), read some advice on [getting started in family history](#), find a map on [Google Maps](#), or visit [other societies](#).

1891 Petition The Society is working on the identification of the names of those from the Ballarat area who signed the 1891 Women's Suffrage Petition. Go to the [1891 Petition Project](#).

Library Collection The Ballarat and District Genealogical Society's entire library collection catalogue is now accessible and searchable on-line on the [Ballarat Central Library](#) or direct from the link - [B&DGS Library Collection](#)

Notice Board

- [B&DGS Next Meeting](#)
- [1891 Women's Suffrage Petition](#) (Project 2009->)
- [Ballarat Family Names](#) (links to external webpages)
- [Ballarat Petitions 1860-1866](#) (CD Order Form - Jan 2011)
- [Ballarat East Petty Sessions Index](#) (CD or Microfiche)
- [Ballarat East Rate Books Index](#) (New CD - May 2010)
- [Diaries, Letters & Journals](#) (Ballarat connections)
- [Victorian Mining Accident Index](#) (Dave Evans 2006)

Ballarat & District Genealogical Society

Mail: PO Box 1809 Bakery Hill Mail Centre, Victoria 3354 Australia

Research queries : research@bdgs.org.au

Visiting Ballarat? Our Genealogical Resource Collection is housed in the Australiana Research Room of Ballarat Central Library
[Visit the Library Website](#) or [Search the Library Collection](#)

The following websites may be of interest...

[PROV Ballarat Archives Centre Reading Room](#) (Map available)
[Ballarat Visitor Information](#) ; [Ballarat Accommodation & Tourism](#)
[City of Ballarat](#) ; [MADE Eureka Centre](#) ; [Sovereign Hill](#)
Transport Links... [V-Line Trains](#) - [VicLink Planner](#) - [Davis Bus Services](#)

This Ballarat Genealogy Website is being REDEVELOPED

This OLD site was last updated on 21 April 2012 but interim updates of content began on 21 November 2013 in preparation for the regeneration of this extensive website pioneered by Daryl Povey almost 20 years ago.



Lake Wendouree Ballarat 1878 : Niven Lithograph

Ballarat.vic.au

[PROV](#)

[Aus.Archives](#)

[Dictionary](#)

[Time & Date](#)

[Sensis](#)

"Victorian Mining Accident Index"

by - Dave Evans



Welcome to the **Victorian Mining Accident Index** compiled by Dave Evans and presented by the Ballarat & District Genealogical Society. This SAMPLE of Dave's Victorian Index includes ~5600 miners who were killed or injured from the early 1850's to the 1940's. The Index provides details of Miner's Name - Date - Status - Children - Location of Accident - Source (where you can get more information). The index is just a sample of the records, it is not complete and will have some errors. If you know of any miners not listed, or corrections to information, please contact Dave Evans (email below) with the details. Click on any letter below to access names of a sample of the miners killed or injured in mining accidents in Victoria.



Online Index Sample [Jan 2001] (Dave has many more since then !)

NOTE : Dave Evans has compiled a CD-ROM on the mining accidents it has over 9100 names [Jan 2005] with much more details on sources and cause of death etc, it is available at \$20.00 plus \$5.00 registered post

[A](#) [B](#) [C](#) [D](#) [E](#) [F](#) [G](#) [H](#) [I](#) [J](#) [K](#) [L](#) [Mc](#) [M](#) [N](#) [O](#) [P](#) [Q](#) [R](#) [S](#) [T](#) [U](#) [V](#) [W](#) [X](#) [Y](#) [Z](#)

Mining Accident queries to Dave Evans : [EMAIL](#) or visit Dave's [Mining Records Page](#).

Link to [Source Code Abbreviations](#) used in this index.

Back to : [Ballarat & District Genealogical Society](#)

www.ballaratgenealogy.org.au/miners.htm

A B C D E F G H I J K L M N O P Q R S T U V W X Y Z

Name	Date	K/I/O	Status	Dep	Comments	District	Division	Source
Rablin, John	1859/00/00	Killed			Fall of earth	Ballarat		(Dig. Evans)
Radcliffe, Thomas	1869/01/07	Injured			***	Ballarat	Nintingbool	(W.Y.H.S.) (PRO)
Radcliffe, Thomas	1886/02/16	Injured	Married, 39 Y. O.			Ballarat	Creswick	(A.R.Sec.Mines)
Radford, R	1875/04/10	Injured			Compo	Castlemaine	Castlemaine	(C.I.R.)
Rafferty, John	1892/07/30	Injured			Compo	Beechworth	Indigo	(A.R.Sec.Mines)
Raffle, William	1862/04/20	Killed	24 Y. O.		Approx Date	Ballarat	Scarsdale	Dickers M. R. (Dig. Evans)
Raglus, Alfred	1883/04/23	Injured			Compo	Sandhurst	Eaglehawk	(C.I.R.)
Rain, John	1875/00/00	Killed	47 Y. O.		Foul air		Melbourne	(Dig. Evans)
Rain, John	1875/00/00	Killed	18 Y. O.		Foul air		Melbourne	(Dig. Evans)
Raine, Joseph	1877/01/11	Killed	Married,	6		Ballarat	Ballarat	(C.I.R.)
Raisbeck, James	1859/00/00	Killed	21 Y. O.		Fall of earth	Castlemaine		(Dig. Evans)
Ramage, Robert	1877/00/00	Killed			Fall of earth	Ararat	Stawell	(Dig. Evans)
Ramage, Robert	1877/10/16	Killed	Married,	1		Ararat	Barkly	(C.I.R.)
Rambank, Joseph	1859/00/00	Killed	21 Y. O.		Fall of earth	Castlemaine	Fryers Creek	(Dig. Evans)
Ramsay, James	1895/02/04	Killed				Ballarat	Ballarat	Ballarat Times Book
Ramsay, Jas	1888/03/09	Injured	Married, 50 Y. O.			Ballarat	Ballarat	(A.R.Sec.Mines)

www.ballaratgenealogy.org.au/miners

**Queensland mining accidents
1882-1901**[State Library of Queensland](#) > [Information for...](#) > [Family historians](#) > Queensland mining accidents 1882-1900

Miners involved in Queensland mining accidents (1882-1900)

Search by surname[A Surnames](#)[H Surnames](#)[P Surnames](#)[B Surnames](#)[I & J Surnames](#)[Q & R Surnames](#)[C Surnames](#)[K Surnames](#)[S Surnames](#)[D Surnames](#)[L Surnames](#)[T Surnames](#)[E Surnames](#)[M Surnames](#)[U & V Surnames](#)[F Surnames](#)[N Surnames](#)[W Surnames](#)[G Surnames](#)[O Surnames](#)[Y & Z Surnames](#)**About this index**

In the period 1882 to 1900, Queensland mining accidents were listed annually in the *Queensland Legislative Assembly Votes & Proceedings*. This index lists, in alphabetical order by last name, the names of those miners involved and provides details of the accident.

<http://fhr.slq.qld.gov.au/minacc>

Miners involved in Queensland mining accidents (1882-1900) - surnames beginning with Go-Gu

[Ab-Ai](#) | [Al-An](#) | [Ap-Ay](#) | [Ba](#) | [Be-Bi](#) | [Bl-Bo](#) | [Br](#) | [Bu-By](#) | [Ca](#) | [Ce-Ci](#) | [Co](#) | [Cr-Cu](#) | [Da](#) | [De-Di](#) | [Do-Dw](#) | [E](#) | [Fa-Fi](#) | [Fl-Fy](#) | [Ga-Gl](#) | [Go-Gu](#) | [Ha](#) | [He-Hi](#) | [Ho](#) | [Hu](#) | [I-Je](#) | [Jo-Ju](#) | [K](#) | [La-Le](#) | [Li-Ly](#) | [Ma](#) | [Mc](#) | [Me-Mi](#) | [Mo-Mu](#) | [N](#) | [O](#) | [Pa](#) | [Pe](#) | [Ph-Pu](#) | [Q-Ri](#) | [Ro-Ry](#) | [Sa-Sh](#) | [Si-So](#) | [Sp-Sy](#) | [Ta-Ti](#) | [To-Ty](#) | [U-V](#) | [Wa-We](#) | [Wh-Wi](#) | [Wo-Wr](#) | [Y-Z](#)

Name	Date	District	Name Of Mine	Remarks	Source
Goddard, Thomas	20 Nov 1894	Charters Towers	New Victoria P. C.	Injured. Truck became derailed and tipped up, jamming his hand against the hanging-wall. (Bruised hand)	1895/3/574
Goding, Henry	19 May 1898	Charters Towers	Band of Hope	Killed. Pasing stopes after the shots had been lighted, one exploded and the dislodged stone fell on him. (Crushed)	1899/3/419
Goggin, Wm.	17 Sep 1894	Gympie	South Glanmire and Monkland	Injured. An accidental blow from a windlass handle. (Wound on forehead)	1895/3/574
Golding, William	5 Sep 1894	Charters Towers	Mills United	Injured. When separating mullock and quartz in the stopes, in putting down a large lump of quartz his finger became jammed. (Finger nearly severed)	1895/3/573
Goldsworthy, J. W.	9 May 1895	Charters Towers	Victoria and Queen	Injured. By bow of kibble on the brace. (Lost tip of forefinger)	1896/4/147

<http://fhr.slq.qld.gov.au/minacc>

New Australasia Gold Mine

[\[edit\]](#)

Creswick in the Victorian goldfields was the site of the The New Australasian No.2 Deep Lead Gold Mine. At 4:45am, Tuesday 12 December 1882, 29 miners became trapped underground by flood waters that came from the flooded parallel-sunk No. 1 mine shaft, only five men survived and made it to the surface. Despite two days of frantic pumping the waters filled the mine shaft. The trapped men scrawled last notes to their loved ones on **billy cans** before they drowned. Some of these have been kept and still bear the messages. The men that perished left 17 widows and 75 dependent children.^[29]

Mount Kembla

[\[edit\]](#)

In 1883 a coal mine was opened near Mount Kembla in the Illawarra District of New South Wales. In 1902 there was an explosion in the mine and 96 men and boys lost their lives, either while at work or in the course of trying to save the lives of others. Every family in the village lost a relative. A service of commemoration is held annually on 31 July at the Mount Kembla Soldiers' and Miners' Memorial Church. This is the worst mining disaster in Australia's history.^[30]

Balmain Colliery

[\[edit\]](#)

Balmain Colliery was located in **Birchgrove, New South Wales** and produced coal from 1897 until 1931 and natural gas until 1945. During this period, 10 miners lost their lives in three separate incidents:

1900 On 17 March 1900, six miners were being lowered down the Birthday shaft. At 1,424 feet the bucket they were travelling in caught on a projection, tipped over and five of the six men fell to their death in the shaft. As a result of this accident, the *Mining Act* was amended to provide guide rails in shafts to prevent bucket swinging or overturning.^[31]

1932 In 1932, a year after the mine closed, a six inch bore was sunk below the Birthday shaft to pipe Natural Gas to the surface. During the sinking of the bore, two men were killed when the gas ignited and exploded.^[31]

1945 During the sealing of the Birthday shaft on 20 April 1945, a rudimentary test was being undertaken which ignited escaping gas and caused an explosion below the seal. The company manager and two men were killed in the accident and another two men injured.^[31]

http://en.wikipedia.org/wiki/Mining_in_Australia#Mining_disasters



Memorial for the workers who lost their lives at Mount Kembla, 1902

North Mount Lyell

[\[edit\]](#)

On October 12, 1912, the **North Mount Lyell Fire** caused the death of 42 miners, and required breathing apparatus to be transported from Victorian mines at great speed, to rescue trapped miners. The subsequent royal commission was inconclusive as to the cause.

Mount Mulligan

[\[edit\]](#)

The 1921 **Mount Mulligan mine disaster** occurred in **Far North Queensland**. These explosions, caused by using naked flame for lighting, killed seventy-five men.

Moura

[\[edit\]](#)

Four serious accidents have occurred at mines in the Central Queensland town of Moura, Queensland|Moura. The first accident took the lives of 13 men in September 1975. In July 1986 there was an explosion at Moura Number 4 Mine. 12 coal miners lost their lives in this disaster that sparked controversy after experts claimed the accident was avoidable. Another explosion killed two men in January 1994 and just eight months later another explosion deep underground took the lives of 11 men.^[32]

Bronzewing

[\[edit\]](#)

On the 26th of June 2000, at the **Bronzewing Gold Mine** in Western Australia (400 kilometers from Kalgoorlie), 18,000 cubic meters of sand-slurry, sludge, mud and rock broke through a storage wall. Three men (Timothy Lee Bell, 21, Shane Hamill, 45 and Terrence Woodard, 26) were killed and eight escaped the 'accident'. It took over a month to retrieve the men from the site.

Beaconsfield

[\[edit\]](#)

Main article: Beaconsfield mine collapse

On 25 April 2006, part of an underground gold mine at **Beaconsfield** in **Tasmania** collapsed. One miner, Larry Knight, was killed by the rock fall, and two others, Brant Webb and Todd Russel, were trapped, leading to a rescue mission that took two weeks to get them out alive.

Bulli

[\[edit\]](#)

1887 At 2.30pm on 23 March 1887, an explosion at the mine in **Bulli** in **New South Wales** killed 81 people.^[33] A special commission was set up to investigate the explosion and concluded:

“ ..that the explosion was caused by marsh gas or carbonic hydrate that had accumulated at the face. That the immediate cause was probably the flame from an overcharged shot fired by a miner in the coal in No. 2 Heading.

”



Accidents

[edit]

In earlier years, coal mining had a high rate of injuries and death, most of them individual deaths. Between just 1900 and 1914 there were 141 men killed, of which 98 were individual deaths.^[24]

The largest-scale accidents are:

- 21 February 1879, [Kaitangata coal mine disaster](#), 34 miners died when candles caused an underground explosion
- 26 March 1896, [Brunner coal mine disaster](#), 65 miners killed by an explosion or by poisonous gases following the explosion. As of 2010 this is New Zealand's largest death toll from an industrial accident.
- 12 September 1914, Ralph Mine, [Huntly](#), a naked light caused an explosion that killed 43 coal miners^[25]
- 3 December 1926, [Dobson coal mine](#), 9 killed by explosion
- 24 September 1939, Glen Afton coal mine, [Huntly](#), 11 asphyxiated by carbon monoxide
- 19 January 1967, [Strongman coal mine](#), 19 miners killed by explosion^[26]
- 19 November 2010, [Pike River mine accident](#), 29 dead

http://en.wikipedia.org/wiki/Mining_in_New_Zealand

Photographs & Newspapers

- Trove
 - But remember not everything is in Trove!
- State Libraries & Archives
- University Archives
- Historical Societies & Museums
- Flickr



IN MEMORIAM.

PRICE—In sad and loving Memory of my dearly beloved husband, **Thomas Price**, accidentally killed at **Bal-lara** on **June 16th, 1918.**

Oh, for the touch of a vanished hand,
And the sound of a voice that is still

(Inserted by his sorrowing Wife,
Elisabeth Price)

PRICE—In loving Memory of our dear father and grandpa, **Thomas Price**, accidentally killed at **Bal-lara** on **June 16th, 1918.**

(Inserted by his loving Son and Daughter-in-law, **George and Mag-gie Price**, and Granddaughter, **Thelma**)

Townsville Daily Bulletin (Qld. : 1885 - 1954) (about) ◀ Wednesday 16 June 1920 ▶

John Trevaskis has been killed in the monkey shaft of the **Day Dawn Gold Mine** at **Charters Towers (Q.)**, through a truck being accidentally pushed into the shaft. It fell upon **Trevaskis** who was **50ft** below.

Western Champion (Parkes, NSW : 1898 - 1934) (about) ◀ Friday 26 January 1906 ▶

FATAL MINING ACCIDENT.

CHARTERS TOWERS, Jan. 18.—**John Trevaskis** was killed in the monkey shaft of the **Day Dawn Gold Mines** to-day. A bracceman accidentally pushed a truck into the shaft, and it fell on **Trevaskis**, who was **50ft. below**, and killed him.

The Brisbane Courier (Qld. : 1864 - 1933) (about) ◀ Friday 19 January 1906 ▶

KILLED IN A SHAFT.

Brisbane, Saturday.

John Trevaskis was killed yesterday in **Monkey shaft** on the **Day Dawn mine, Charters Towers.** The bracceman accidentally pushed a truck into the shaft, and it fell on **Trevaskis**, **50ft. below.**

Barrier Miner (Broken Hill, NSW : 1888 - 1954) (about) ◀ Saturday 20 January 1906 ▶

NEW GYMPIE MINES

Company Registered

SECRETARY RETICENT

The registration of the New Gympie Mines, Ltd., owners of a promising mine in the Wowan district, was finalised on Saturday morning. Favourable reports from the mine and a visit of three directors of the company to Gympie last week are believed to have been responsible for this action being taken.

When questioned on the matter on Saturday morning, Mr. R. E. Hartley, secretary of the company, said he had no statement to make other than that the company had been registered. He also admitted that he had despatched a telegram to all syndicate shareholders, reading: "Important developments. Company registered. Advise declining all offers our syndicate shares."

The New Gympie, which was formerly known as the Kewpie, is situated off Pheasant Creek, about 15 miles from Wowan. The company holds a mining lease of 60 acres.

Last year a crushing from the mine gave a return of over 4 ozs. to the ton. An enlargement of the company followed, and this year the working staff was increased from one to four under Mr. W. Rowe as working manager. Further developments are expected shortly.

The shareholders in the company are William Rowe, Denis Bill, Charles H. Murphy, John Joseph Booker, M. Roxburgh, F. Kelly, H. T. French, J. T. M'Mullep, D. P. Carey, L. T. Palmer, R. E. Hartley, E. M. Hockings.

Morning Bulletin (Rockhampton, Qld. : 1878 - 1954) [about](#) [Monday 3 August 1931](#)

NEW COMPANY.

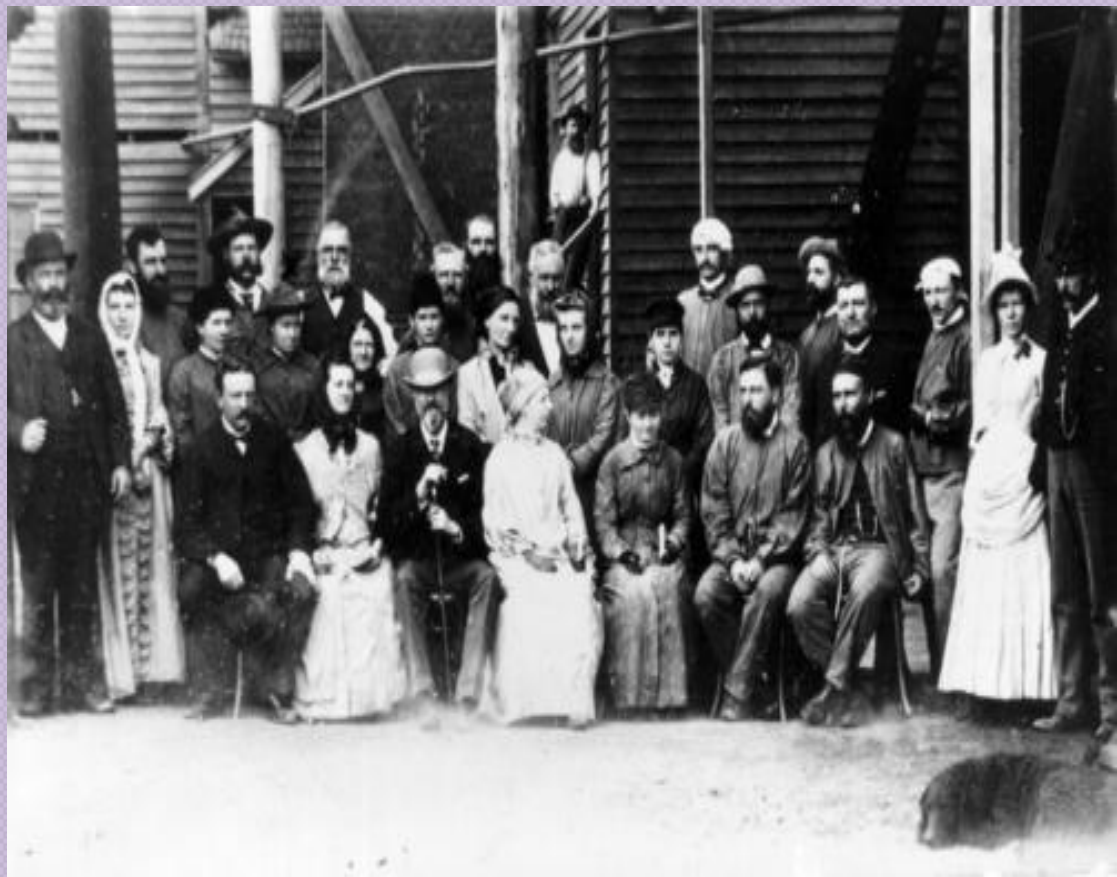
Potters Mine, N.L.; registered February 9; capital £12,000 in £1 shares. Subscribers, A. W. E. Weaver, E. R. ter, H. Burton, W. Felton, J. L. Purves, J. Ryan and C. I. Watt; manager Percy G. Pring. Registered office, Equitable Buildings, George-st. Place of operations, near Condobolin. This is one of the best paying concerns in the Condobolin district, and for many years was worked by Mr. Potter privately.

Leader (Orange, NSW : 1912 - 1922) [about](#) [Thursday 18 February 1915](#)



J B Atkinson, Gympie 1897
Images John Oxley Library

Visit of Sir Anthony & Lady Musgrave
North Phoenix Mine Gympie 1888



Christoe St, Copperfield 1876
Images John Oxley Library





Quart Pot Hotel, Stanthorpe
1872
Image John Oxley Library

Schoolchildren 1873
Stanthorpe State School
Image John Oxley Library

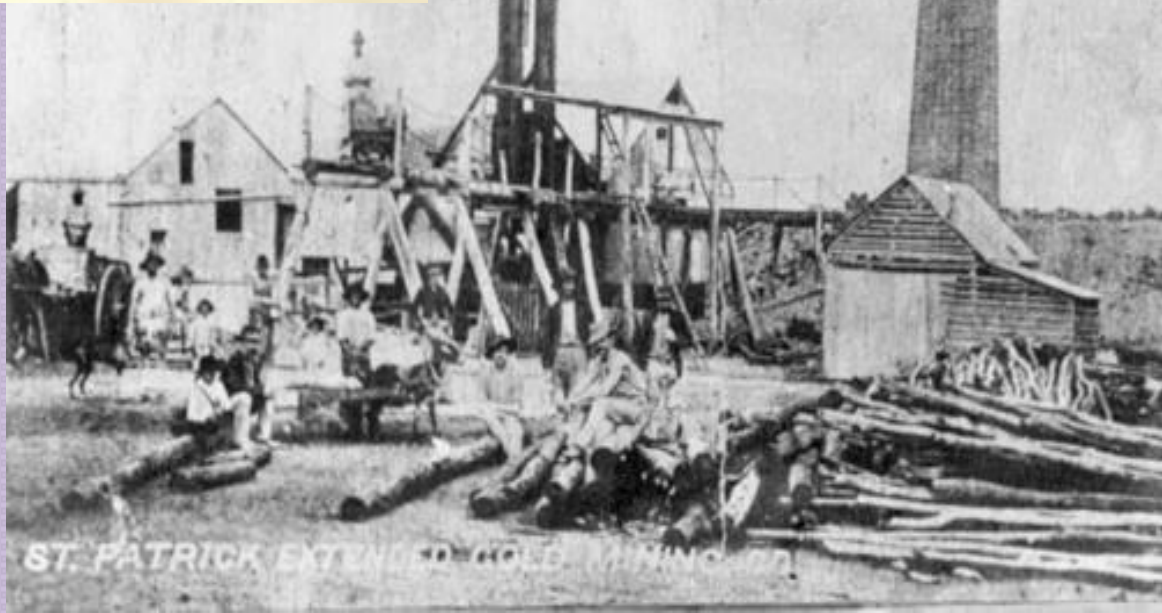


Images John Oxley Library

Cradling for gold outside
Charters Towers



Workers outside St
Patrick Extended
Charter Towers ca 890



Favorite Actions Share

Newer Older



By the_ferret Jonathan Stitts + Add Contact

This photo was taken on November 1, 2008 in Walgett, New South Wales, AU, using a Canon EOS 350D Digital.



240 views

This photo belongs to

the_ferret's photostream (1,199)



This photo also appears in

- Big Trip (set)
Big Trip (group)
Flickr Australia (group)

Tags

Lightning Ridge - opal mine tunnel

Lightning Ridge is full of small opal mines - people move there, stake a claim and start digging. This mine is no longer active, but open for tourists to explore.

For more info see the Lightning Ridge entry on the Big Trip website.

Conclusion

- Follow the gold (don't forget other minerals too)
- Most records are not indexed
- Not everything has survived
- Have fun & good luck!

